

Exterior Material Schedule:

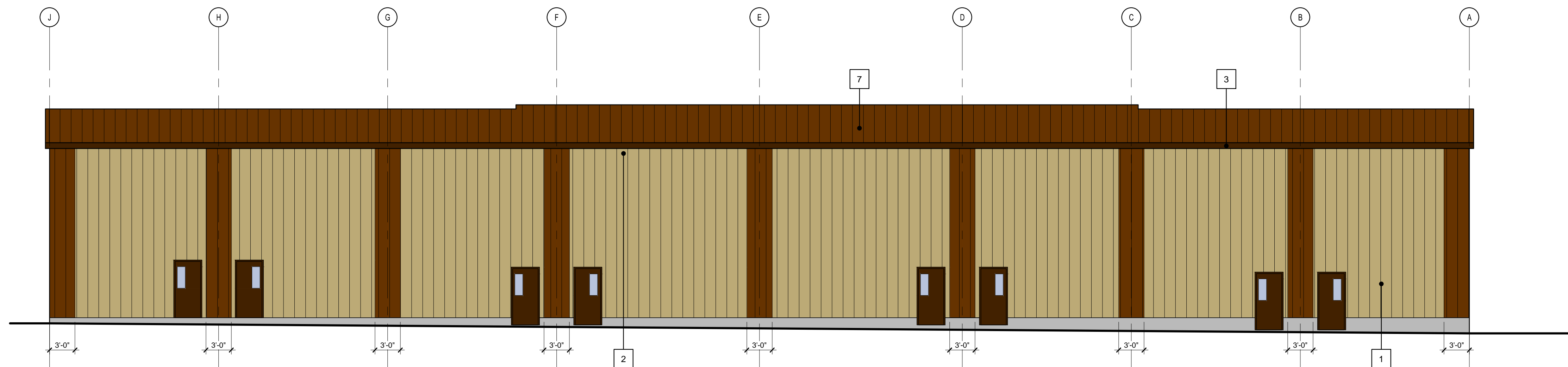
- 1 PBR METAL WALL CLADDING - BUCKSKIN
- 2 PBR METAL WALL CLADDING - DARK BRONZE
- 3 METAL FASCIA - COFFEE BROWN
- 4 METAL OVERHEAD DOOR - COFFEE BROWN
- 5 METAL MAN DOOR - COFFEE BROWN
- 6 TIMBER ELEMENTS - NATURAL
- 7 METAL ROOF - DARK BRONZE
- 8 CONCRETE PAVING - GRAY

Notes:
 Verify all dimensions, elevations, and datum; report any errors and/or discrepancies to M-TECH Designs prior to construction.
 All drawings remain the property of dam designs inc. This design and drawing may not be reproduced without permission of M-TECH Designs.
 Do not scale drawings. This drawing supersedes previous issues

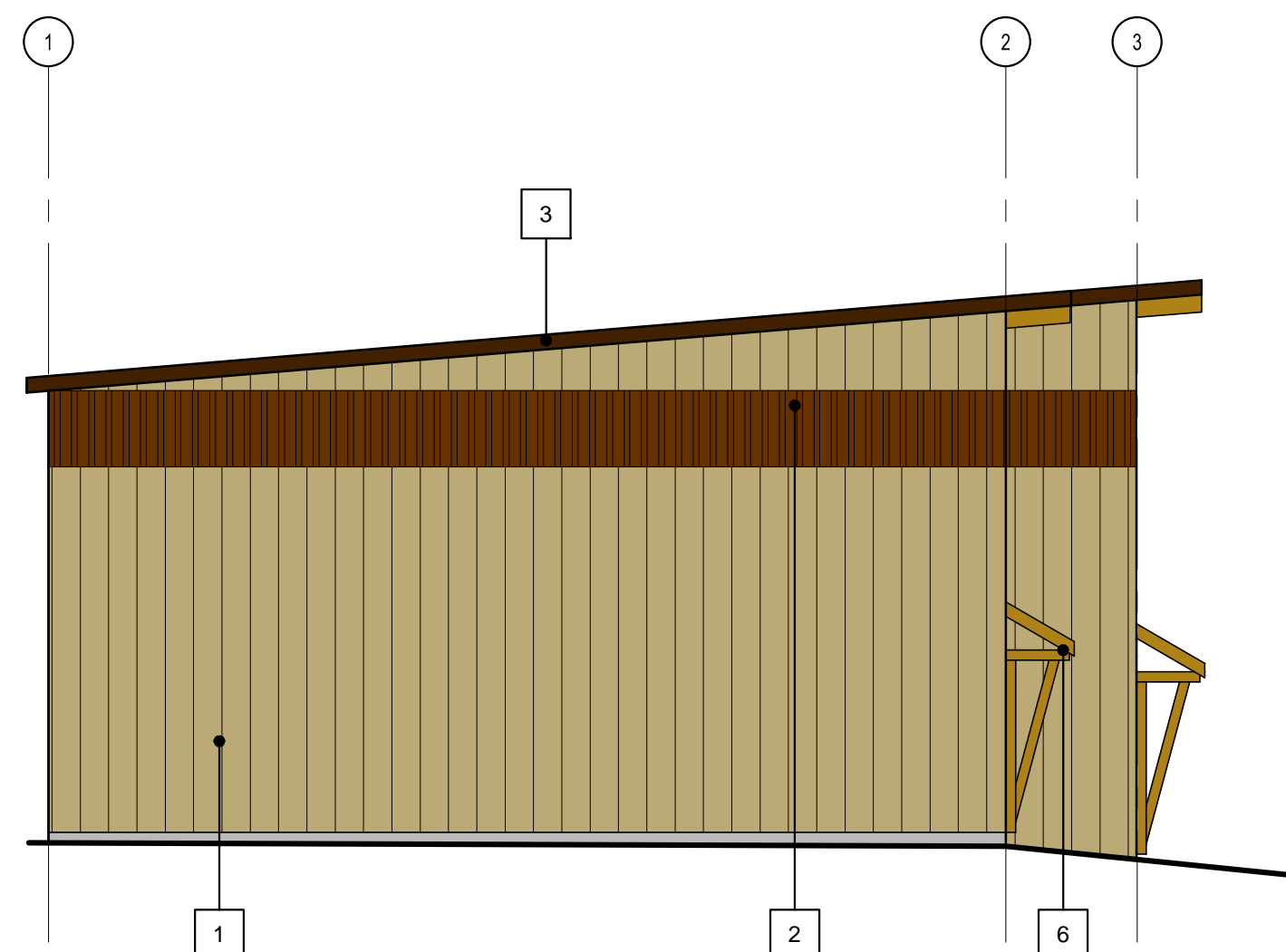
Consultant:

Seal:

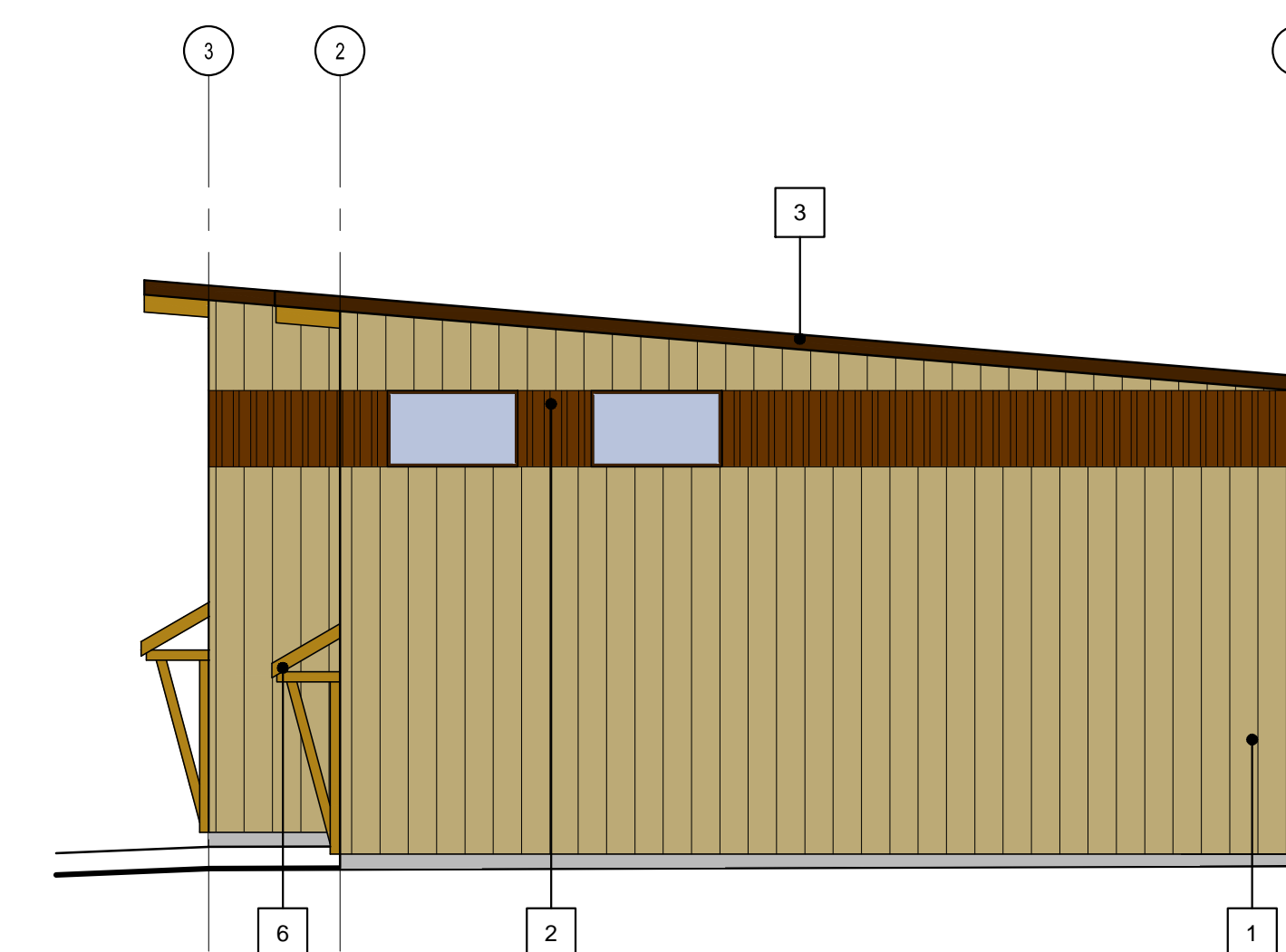
1 FRONT ELEVATION - BUILDING 3
 DP-07 1/8" = 1'-0"



2 REAR ELEVATION - BUILDING 3
 DP-07 1/8" = 1'-0"



3 LEFT ELEVATION - BUILDING 3
 DP-07 1/8" = 1'-0"



4 RIGHT ELEVATION - BUILDING 3
 DP-07 1/8" = 1'-0"

No.	Description	Date (YY-MM-DD)

Revisions

Issued For	Date (YY-MM-DD)
DEVELOPMENT PERMIT	2018-03-16
DEVELOPMENT PERMIT COMMENTS	2018-04-30

Drawn By MAF	Scale AS NOTED
Project Number 18.003	Date 2018.01.15

Project
 The Bays of Windemere
 Invermere, British Columbia

2244 Bayside Circle SW Airdrie, Alberta T4B 0V6
 P: 403.433.9315 murray@mtechdesigns.ca
 mtechdesigns.ca

Drawing Title
ELEVATIONS

Drawing Number
DP-07